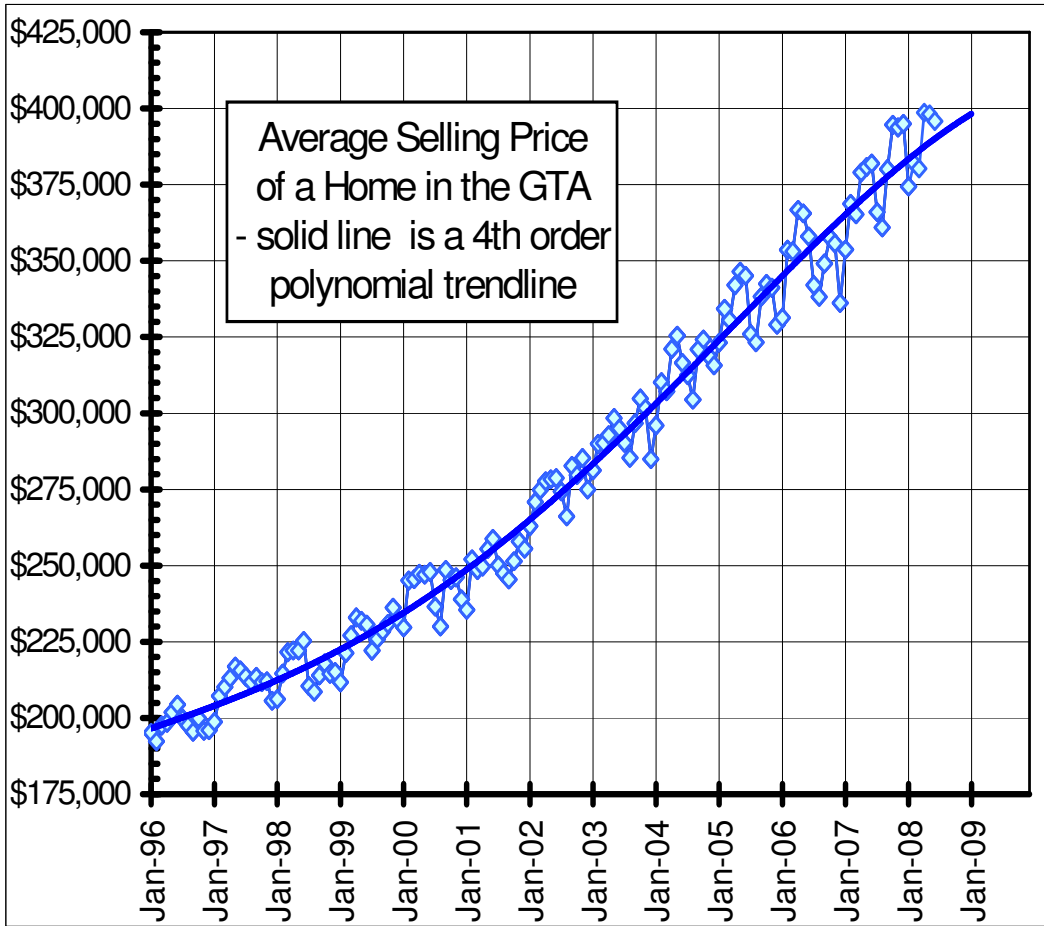
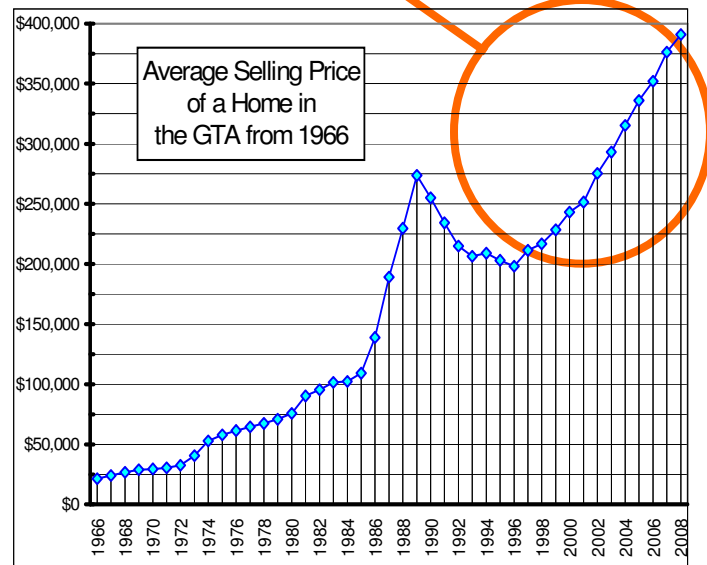
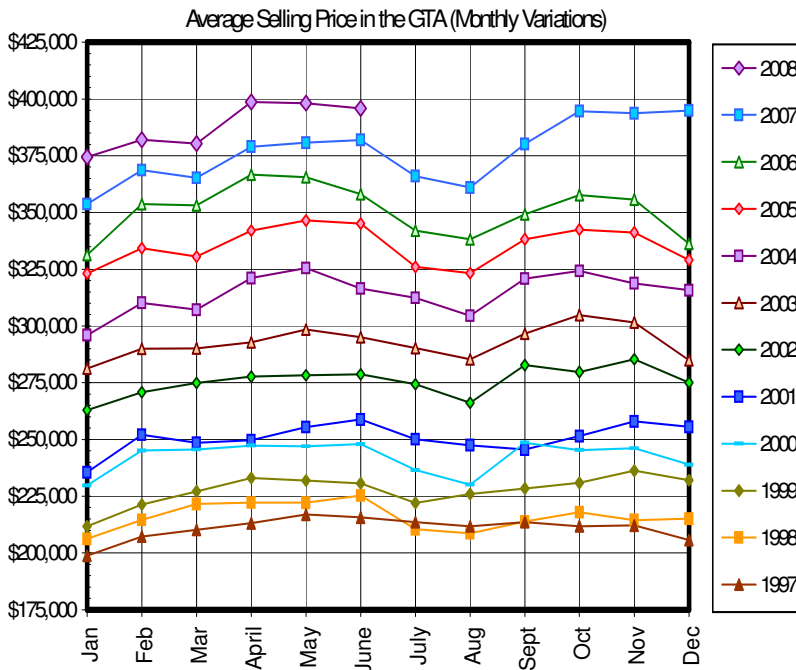


Real Estate Trends in the Greater Toronto Area



Since 1997 the prices have been steadily increasing in the GTA.

The monthly chart is for information only. The yearly chart is a better indication of the overall price trends.



Toronto Real Estate Board data for single family homes
 Graphs by Heather and Wayne Newman, Sales Representatives
 CENTURY 21 Heritage Group Ltd., Brokerage (905)895-1822
 July 7, 2008

Monthly update available at: www.heatherandwayne.com